

WEATHER

Table with weather forecasts for April 16-22, including Min, Max, Precip, and Trace indicators.

The Chelsea Standard

QUOTE

"If a man never contradicts himself, it is because he never says anything." -Miquel De Unamuns.

ONE HUNDRED-FIFTH YEAR—No. 45

12 Pages This Week

Plus 4-Page Supplement

CHELSEA, MICHIGAN, THURSDAY, APRIL 24, 1975

15c per copy

SUBSCRIPTION: \$6.00 PER YEAR

Kindergarten Round-Up Slated Today

One last reminder. The kindergarten round-up for parents of children eligible to enter the 1975-76 session of kindergarten classes...

Tobin Files for Re-Election to School Board

Martin H. Tobin has filed a nominating petition for re-election to the Chelsea School Board.

Golf Team Opens Tuesday Against Saline

For two weeks, members of this year's varsity golf team along with 14 prospective members have been driving, putting, and chipping balls on the Inverness golf course...

BEAMING BRIDES OF YESTERDAY



BEAMING BRIDES OF YESTERDAY and tomorrow, modelling gowns representing more than a century of bridal fashion...



NATIONAL HONOR SOCIETY members initiated into the Charles S. Cameron Chapter April 16 are pictured left to right, first row: Dawn Freysinger, Dian Grant, Vicki Koch, Rolf Lomo, Kevin Schmidtke, Lauri Schrader, Victor Steinbach, Kris Tolvanen, Laura Aldrich, Dora Alexander, Kurt Allhouse, and Cindy Armstrong...

National Honor Society Initiates 82

New members of the Charles S. Cameron Chapter of the National Honor Society were initiated Wednesday, April 23 in the Chelsea High School Auditorium.

Varied Activities Planned To Benefit Cancer Society

Twenty-three Chelsea tennis buffs were invited to play their best games at the Liberty Racket Club in Ann Arbor, to kick-off this year's Cancer Crusade for Chelsea.



BUILDING TRADES HOME: Posing for a photo in front of the house are these seven boys and others at Chelsea High school are constructing in their building trades class...

Baseball Team Starts League Play Friday

Chelsea Bulldogs have been playing a lot of ball in the past week, to mark up three wins, against Tecumseh and Manchester and Columbia Central...

Track Team Has Wins Over Lincoln, Saline

Chelsea track team members continued their drive for victory in the Southeastern Conference by defeating Saline, 69-54, on the opponents' home field Tuesday, April 22.

Don Cooper Brings New Travel Film Saturday

A perennial favorite among Chelsea Kiwanians in their Travel and Adventure Series (Travelogue) is the incomparable Don Cooper, whom many consider to be one of the top-ranking travelogue artists in the country.



DON COOPER

Library Sets New Non-Resident Fees At the April meeting of the McKune Memorial Library Board, non-resident library card fees were set.

Other events planned for coming weeks are wine-tasting parties, of which there will be five; several ethnic dinners, planned to involve Chelsea couples; numerous neighborhood coffees, and the much talked about "Kaleidoscope of Chelsea Brides" fashion show...

Established 1871 The Chelsea Standard Telephone 475-1571
Excellence Award By Michigan Press Association 1951-1952-1960-1964-1965-1966
Walter P. Leonard, Editor and Publisher

Published every Thursday morning at 300 North Main Street, Chelsea, Mich. 48118, and second class postage paid at Chelsea, Mich., under the Act of March 3, 1879.

Subscription Rates (Payable in Advance)
In Michigan: One Year \$6.00, Six Months \$3.50, Single Copies \$.20
Outside Michigan: One Year \$8.50, Six Months \$4.50, Single Copies \$.25

MEMBER NATIONAL NEWSPAPER Association - Founded 1888
National Advertising Representative: MICHIGAN NEWSPAPERS, INC. 257 Michigan Ave. East Lansing, Mich. 48823

Uncle Lew from Lima Says:

DEAR MISTER EDITOR: Well, spring sprung out at our little place, just like we figured it would. It's a comfort to realize they still is a few things that we can depend on to operate on schedule. My old lady is just as regular as spring. The first pretty day she commenced to repeat the

10 or 20 commandments about how I'm going to help with the cleaning and with getting the garden in, like I ain't been helping for the past 50 year.

It was good, Mister Editor, to get down to real issues during the session at the country store Saturday night. It was Zeke Grubb that allowed the hole thinking machinery of this country has been overhauled for the worst in the last 25 year. He said we got our gears stripped when we can repeat down to the penny how much military aid we are sending to one side in a civil war on the other side of the world, but we ain't got no idea how much our county tax rate is or how much we pay our police to keep order at home. It's that kind of big thinking, declared Zeke, that is the root of some of our woes.

General speaking, the fellers was agreed with Zeke's comment on fancy thinking. Bug Hookum claimed our schools is to blame for a lot of it. We teach agriculture, horticulture and all them cultures, Bug said, and we know all them big words ain't worth a cuss 'til we boil 'em down to farming and ranching. We got companies begging for welders and accountants, Bug went on, and we send our youngsters to college where they take training in movie appreciation and how to shoot pool. Ed Doolittle got the floor and said he read a piece where some college is giving a course called the "science of matrimony." In the first place, matrimony ain't a science, Ed said, it's a mistake ever man ought to make once in his own good. In the second place, Solomon himself couldn't teach the subject cause it's like teaching how it feels to take a quick swaller of scalding hot coffee. You got to do it to know it, and when you do you're stuck with it.

Actual, broke in Zeke, the hole world is like the ocean liner that lost its compass. The captain come on the speakers and told the passengers not to worry. We don't know where we are, the captain said, but we know we're making good time. It looks like, said Zeke, that the civilized world has give up all important business but learning how to kill one another quicker.

Personal, Mister Editor, I couldn't help but recall the piece I saw in the papers recent where dentists die younger and have a higher rate of suicide and divorce

Howell Livestock Auction Starts 1 p.m. Every Monday Mason 677-8941
The Wise Owl Says Ship to Howell Phone 546-2470. Blm Franklin Market Report for April 21

CATTLE - Good to Choice Steers, \$43 to \$44.50
Good-Choice Heifers, \$40 to \$43
Fed-Choice Steers, \$34 to \$40

GOVS - Heifer-Cows, \$26 to \$28
Dairy-Cows, \$23 to \$26
Caney, Cutter, \$18 to \$23
F&I Beef Cows, \$18 to \$20

BULLS - Heavy Bologna, \$28 to \$31
Light and Common, \$27 and down.

GALVES - Prime, \$50 to \$55
Good-Choice, \$40 to \$50
Heavy Deacons, \$25 to \$33
Cull & Misc., \$15 to \$20

FEEDERS - 300-400 lb., Good to Choice Heifers, \$22 to \$27
400-700 lb., Good to Choice Steers, \$25 to \$34
300-500 lb. Holstein Steers, \$24 to \$28
500-800 lb. Holstein Steers, \$22 to \$26
Common, Medium, \$20 and down.

SHEEP - Shorn Slaughter Lambs, Choice and Prime, \$48 to \$50
Good Utility, \$40 to \$48
Washed Slaughter Lambs, Choice and Prime, \$45 to \$48
Good Utility, \$40 to \$45
Slaughter Ewes, \$8 to \$14
Feed Lambs, all weights, \$35 to \$40

HOGS - 200-250 lb. No. 1, \$41.50 to \$42.50
200-250 lb. No. 2, \$36.50 to \$41.50
250 lb. and up, \$38 to \$40
Light Hogs, \$37 and down.

SOVS - Fancy Light, \$35 to \$36
300-500 lb., \$36 to \$37.50
600 lb. and up, \$36 to \$37

HOVS and Steers: All weights, \$30 to \$35

Feeder Pigs: Per Head, \$25 to \$33

HAY - 1st Cutting, \$1.00 to \$2.00
2nd Cutting, \$2.00 to \$3.00

STRAW - Per Bale, 90c to 55c

COWS - Tested Dairy Cows, \$350 to \$500
Tested Beef Type Cows, \$200 to \$300

GX-100 SMOKE DETECTOR
Self-Contained Early Warning Fire Detector
CHELSEA HEATING & AIR COND. CO. Phone 475-2419

LAFF OF THE WEEK



"Sure, you're in a rut - we're all in a rut - look at Captain Kangaroo."

JUST REMINISCING

Items Taken from the files of The Chelsea Standard

4 Years Ago... Thursday, April 23, 1971 - Initiation ceremonies into the Charles S. Cameron chapter of the Chelsea High School National Honor Society took place at the high school auditorium, Wednesday afternoon, April 21.

24 Years Ago... Thursday, April 26, 1951 - The Women's Club of Chelsea observed its 20th anniversary at a dinner meeting held in St. Paul's church hall Tuesday evening. Twenty-nine members and two guests were present to hear the guest speaker, Mrs. Leon Roach, of Ann Arbor. Mrs. Roach was introduced by a past president of the club, Mrs. Phillip Olin, now of Ann Arbor.

14 Years Ago... Thursday, April 27, 1961 - George Knickerbocker is to serve as campaign chairman for the fall campaign for funds for the Chelsea Community Chest, according to an announcement made this week by the Chelsea board of directors. Mrs. Theodore Bahmiller was the surprised guest of honor at the Mother-Daughter banquet held last night at the Methodist church. She was selected for the honor because of her 50 years of service as the church's cradle roll superintendent.

34 Years Ago... Thursday, April 24, 1941 - Jurors were drawn Saturday for the May term of district court which opens on Monday, May 5. Among them were William Eise-man, John Liebeck, and Cora Bissel of Chelsea.

Draft Registration Rules Changed
Young men no longer have to register for the draft within a month of their 18th birthdays. That rule ended April 1, 1975. From now on youths must register during a specified period once a year. Dates of the first mass registration, to be held in early 1976, will be announced later, according to Harold Cross, office manager of the Ann Arbor Selective Service System area office in Ann Arbor.

Metro Beach Metropark near Mt. Clemens - Formal dedication of this unique 550-acre playground, with its 1 mile of waterfront along Lake St. Clair, took place on Saturday, June 23, 1951.

KEN YOUNG CONSTRUCTION
PHONE 426-3342 or 878-6342 (after 6 p.m.)
Home Builder - Remodeling - Carpenter
Contractor - Brick Work - Fireplaces
Aluminum Siding - Block & Brick Work
Painting - Decorating - Trucking & Excavating
FOR SALE - 3 scenic 10-acre parcels. Two with lake frontage on private lake.
FREE ESTIMATES WITH GUARANTEE ON ALL OUR WORK.
PHONE KEN YOUNG after 6 p.m. 668-7420 or 878-6342

MICHIGAN MIRROR

By Elmer R. White, Secretary, Michigan Press Association

Michigan's purse may be flatter than the wallets of its unemployed - despite the latest boost in the state income tax, warns a veteran Republican lawmaker.

Sen. Harry DeMaso, former chairman of the Senate Taxation Committee, says the state must begin to control spending, and make sure the money allocated is doing its job, if another tax hike is to be averted.

"Our budget has gone up \$250 million in the past six years," DeMaso says. "We've always spent more than we've taken in, and had a paper surplus." He notes also that efforts a decade ago to cut the number of state departments were aimed in part at cutting the number on the state payroll. "But there were about 31,000 on the payroll then, and there are almost 60,000 now," he says.

The state should pool resources of Michigan fiscal experts, "bring in some of the real brains and let them have free rein to find out what's wrong with our system," DeMaso says.

Such a scheme worked in Minnesota a couple of years back, resulting in a savings of some \$70 million the first year, DeMaso declares.

In recent speeches in Lansing and Ann Arbor, the Battle Creek lawmaker has called also for a "team concept between government and business."

"We've made 'profit' a dirty word," DeMaso contends. "But if a company makes a profit, there's more employment, new buildings, expansion. And those things generate more money for the state's economy."

"The proposed so-called business privileges tax, regardless of the business taxes it eliminates, again is nothing more than the old business activities tax, which was released in 1967."

"To tax business ventures, regardless of whether they make a profit or not, may be a good way to put more money into the state coffers but in the long run, it is the best way to discourage business and further disenchant those who feel Michigan is a good place to do business," he says.

DeMaso figures that "when you

stymie business, you stymie every thing."

Did You Know Tidbits of travel information, details of state park offerings, State Police phone numbers, word on the deer herd—all that and a map too.

That's what the Highway Department has packed onto the sides of the official 1975 Michigan map, billed as "the most comprehensive transportation map ever published by the state."

The maps, available at numerous places around the state as well as through the mail (MAPS, Dept. of State HIGHWAYS AND TRANSPORTATION, Lansing, 48904), cost the state about 7.5 cents apiece to print. But they're free to anyone who wants a copy.

Concentrated Education Lop-sided—that's the distribution of pupils, teachers and classroom buildings in Michigan.

Dr. John Porter, state superintendent of public instruction, says nearly 90 percent of students, teachers and buildings are in slightly more than half the state's school districts.

Nearly 1.9 million of Michigan's 2.2 million students in the K-12 program are enrolled in 283 of the state's 631 K-12 school districts. Those same 283 districts

account for 87 percent of the state's K-12 teachers and 85 percent of classroom buildings.

Conversely, the 114 smallest school districts include only 3.4 percent of the state's pupils, 3.5 percent of the teachers and 5.5 percent of classroom buildings.

What does it all mean? Porter suggests that the statistics "dramatize the need for legislation that would encourage cooperative shared programs among small K-12 districts."

State incentive grants, for combinations of K-12 districts that want to develop plans for comprehensive education services, have been urged by the State Board of Education. Porter says he expects legislation dealing with this idea will be introduced soon in the House or Senate.

Carol Fairbrother Cited as U. of M. Angell Scholar

A junior in the School of Engineering at the University of Michigan, Carol Fairbrother was cited as a James B. Angell scholar at the U. of M.'s annual honors convocation, April 11.

An Angell scholar is one who has maintained an all A average for academic work during two consecutive terms or more.

Carol is co-ordinating vice-president of the Engineering Council, an active member of the Society of Women Engineers and the American Society of Mechanical Engineers and a member of Phi Beta Phi Sorority.

She is the daughter of Mr. and Mrs. F. G. Fairbrother of Waterloo.

Subscribe today to The Standard!

ROCKCRETE PRODUCTS TRANSIT-MIXED CONCRETE
WASHED SAND & STONE - ROAD GRAVEL LIMESTONE
Rite-Way Mixers
475-2848
6991 CHELSEA-MANCHESTER RD., MANCHESTER

Save! Thurs. and Fri. April 24-25. Banana Split Sale 49¢
Dairy Queen
You'll go bananas for this great sale on the famous DAIRY QUEEN* banana split. Two fresh-cut banana slices and America's favorite treat, topped with chocolate, strawberry, pineapple and whipped topping. It's "scrumpdillyshus"! Treat the whole gang during this special offer at participating DAIRY QUEEN Stores. It's "scrumpdillyshus"!
"Let's all go to the DAIRY QUEEN"
CHELSEA - SOUTH MAIN ST.
*Reg. U.S. Pat. Off., Am. D.Q. Corp. (C) Copyright 1975, Am. D.Q. Corp.

REFINANCE YOUR LIMITED TERM LAND CONTRACT
Mortgage rates are the lowest in many months (Economists predict rates to increase sharply by year-end)
Receive Title to your property
Lower monthly payments available in many cases
Bring your land contract to any of the nine offices of Ann Arbor Federal Savings for refinancing or call 769-8300 for information.
ANN ARBOR FEDERAL SAVINGS
9 Offices: Ann Arbor, Chelsea, Dexter, Manchester, Ypsilanti and Brighton.
Founded 1890 Member FSLIC

May Fellowship Day Slated at Zion Lutheran

Church Women United in Chelsea will celebrate May Fellowship Day Friday, May 2 at Zion Lutheran church.

Since the first May Fellowship Day in 1933 it has been traditional for church women across the country to use the first Friday in May to emphasize the creative and healing relations that are possible among people in every community.

This year's theme, "Open to Live Fully," is an invitation to experience wholeness as persons, living life to the full, through personal growth and sharing in the lives of others. For Christian women this also means becoming open to those who have been damaged by society or cast out because of past acts, and to those who have been deprived because of economic circumstances.

Church Women United is committed in the 70's to open opportunities for women in transition. In an agenda that includes a full life for all, they will endeavor to broaden the consciousness of women, affirming their full personhood; to strive to rectify the injustices which saddle many women with educational, economic, and physical handicaps; to assist women in transition situations—housing and jobs for families moving from poverty to control of adequate incomes.

Women from Chelsea will listen to a panel discussion given by Marcia Cameron, the Institute of Gerontology; Linda Ormsby, director of Social Services, and Nona Elfeld, from the Washtenaw County Mental Health Center.

The noon pot-luck luncheon (bring your own table service) will include discussion among guests as well as the panel.

All interested community persons are encouraged to attend.

PHOEBE CIRCLE

Phoebé Circle of the First United Methodist church met for a desert luncheon featuring as speaker the Rev. Robert Benedict, whose program included an impressive commentary on the book, "The Hiding Place," by Corrie ten Boom.

The April 16 meeting was held at the home of Mrs. Leah Smith. Twelve members and two guests were present. The Rev. Benedict gave the devotional program.

Chairman, Mrs. Darrel Harris, presided over the business meeting. Several future events and topics of interest to the members were discussed.

A pot-luck picnic was planned for the next meeting at 1 p.m., June 18, at the home of Annabelle Elsson.

Magie Mirror Beauty Salon

Open Tuesday thru Friday 9 a.m. to 9 p.m.
Saturday, 8 a.m. to 3 p.m.

PHONE 665-0816

Charles Blanchards To Be Honored on 25th Anniversary

Honoring the silver wedding anniversary of her parents, Karen Blanchard, daughter of Mr. and Mrs. Charles Blanchard, is hosting an Open House Sunday, April 27.

The Sunday afternoon celebration will be held at St. Paul United Church of Christ.

Married April 29, 1950, Mrs. and Mrs. Blanchard moved to Chelsea from Gregory 19 years ago.

Mr. Blanchard has been employed by the Dana Corp. for 25 years. Mrs. Blanchard works for Federal Screw. She has been with the company for 22 years.

Rebekah Lodge Sending Two Boys To Summer Camp

Chelsea Rebekah Lodge met April 15. Sixteen members were present.

Vice-Grand Olla Voeln read a detailed report of the recent meeting of the 12th District held April 5 at Vandercook Lake.

Eleven members were present and took part in a Memorial Service for all district members who died this year. Mrs. Mary Ann Coltre was soloist for the service. 135 members, representing all branches of the lodge were in attendance.

Members voted to sponsor two boys to attend the IOOF and Rebekah Camp at Big Star Lake, Darrow, Keezer and Mark Beyer were selected to go.

The report of the rummage sale was given by the Noble Grand, "a great success."

Other money-making projects this year will be paring knives and dish cloths.

Emblematic Memorial Flags were ordered. Mrs. Josephine Hochrein was appointed to decorate deceased member's graves with flags for Memorial Day.

A catered dinner will be delivered to Mr. and Mrs. Rha Alexander for their 60th wedding anniversary this week.

Mrs. Lubille Alstatter is chairman. Mrs. Alexander is the only remaining charter member of the Lodge.

Mrs. Dorothy Keezer and Edith White delivered flowers to Mrs. Susie Williams and to Mr. and Mrs. Ross Munro from the Memorial flowers. The remaining flowers were taken to the IOOF and Rebekah Home in Jackson for the pleasure of residents.

Mrs. Gladys Breitenwischer and Helen Harris were reported in the hospital. Get-well cards were sent.

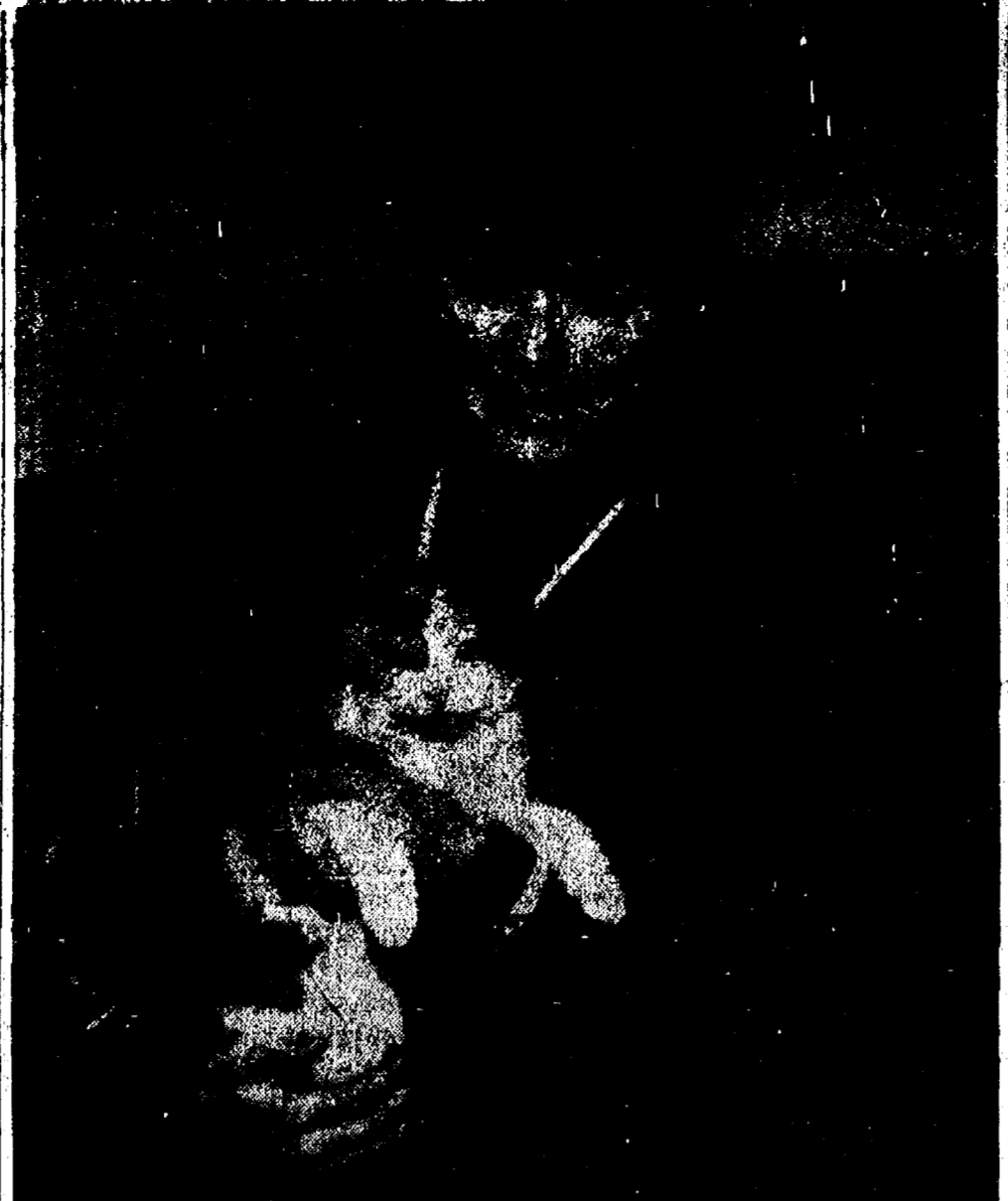
First visitation was held at Home City April 18.

The evening's committee were Noble Grand, Nina Lehmann and Vice-Grand, Olla Voeln.

The next meeting will be May 6 at 7:30 p.m.

CORRECTION

The story concerning the fire in the Trist Rd. home belonging to the Daniel Robbins family incorrectly stated that the family's upholstery business was housed in the home. The Robbinses are Amway distributors and in no way connected with the Waterloo Upholstery Shop, owned by their neighbors, Oliver and Georgia Shepard. Neither places of business were damaged in the fire.



THIS CALICO-CREAM kitten is now available for adoption at the Humane Society of Huron Valley shelter on Cherry Hill Rd., Ann Arbor. Delores Gibson, board president of the Society, explained this kitten has made a big hit around the shelter and will be kept as an office pet unless someone offers her a home.

Beta Sigma Phi Chapter Plans Founders Day Celebration

Members of the Beta Sigma Phi Chapter of Xi Gamma Mu have spent the month of April planning for the Founders Day celebration April 28.

Plans for the celebration were finalized at an April 21 meeting held at the home of Ruth Blecha. The celebration will include a 7 p.m. dinner at Weber's Inn in Ann Arbor.

Beta Sigma Phi is a social, cultural and service organization for women.

The celebration will take place in 24 countries where 10,500 chapters exist, with some 250,000 members. It is a non-political, non-sectarian organization with a keynote of friendship.

While April 30 is the exact date of the 44th anniversary of the founding, by Mrs. Walter W. Ross in Abilene, Kans., the week of April 27 has been proclaimed Beta Sigma Phi week in many states and cities.

Chapters of five different degrees meet the growing needs of various age groups. Members are active in small chapter groups and each chapter adapts the plans for social, civic, and service and cultural activities to fit the interests of its members.

When Beta Sigma Phi events or civic endeavors are larger than one chapter can plan alone, all chapters in a city or area may combine their strength. There are state conventions each year which any member may attend.

Internationally the chapters have created three special funds: the International Loan Fund, through which members help one another; the International Endowment Fund through which vast sums have been donated to cancer research, cystic fibrosis, homes for underprivileged children, and many other causes; and the Exemplar Fund, which helps to support Literacy Village in India.

The Xi Gamma Mu Chapter of Chelsea sponsors a child at the Plymouth State Training

County Federated Women's Clubs Elect Officers at Annual Meeting

The Washtenaw County Federation of Women's Clubs held their annual meeting Monday, April 21, with a luncheon and mini-art fair.

Election of new county officers took place at the all-day affair held at St. Paul's church in Saline.

Elected president was Dr. Louella Cable of Ann Arbor; 1st vice-president, Mrs. Jane Kohlenberg of Ypsilanti; 2nd vice-president, Mrs. E. L. Freeland of Milan; treasurer, Mrs. Chester Koceski of Manchester; and recording secretary, Mrs. Thomas McNulty of Saline.

The women made plans for the annual meeting of the Southeastern Michigan State Federation of Women's Clubs to be held in October.

Delegates representing some 4,000 members of clubs in the southeast area will convene at Weber's Inn in Ann Arbor for the fall meeting.

The Washtenaw County Federation will serve as hostesses for the event.

Town & Country Child Study Club Studies Needlepoint

The Town & Country Child Study Club met at the home of Mrs. Carol Benedict for a lesson in needlepoint by Sherry Lawton, Tuesday evening, April 22.

Mrs. Jane Ramsey co-hostessed the evening.

Following a short business meeting, Sherry demonstrated different needlepoint stitches. The members then worked on their program booklet covers for next year.

Members were pleased to welcome Mrs. Joanne Waller back to their group.

The next meeting will be May 13 at 7:30 p.m. at the home of Mrs. Joanne Waller, 13682 Old US-12. Program for the evening will be a speaker from the Child Guidance Clinic in Ann Arbor. The speaker will speak on maintaining your balance. Guests are welcome.

Child Study Club Committees Named

Chelsea Child Study Club's April 22 meeting was at the home of Jean French, with 27 members and one guest being present. Ruth Nugent was the guest.

During the business meeting, the club approved a donation to the Chelsea Scholarship Fund.

Karen Galbraith announced the committees and their chairpersons for the 1975-76 club year as follows.

Program chairman, Joan Eisele, with members Nancy Grau, Marti Dmoch, and Jean French.

Finance chairperson, Mary Jo Miller, with members Marian Sprague, Vanetta Mills, Shirley Chapman and Diane Borton.

On recommendation by the finance chairperson, Mary Jo Miller, the club unanimously approved a Christmas Bazaar in December as the club's finance project.

Karen Galbraith announced the next two meetings: May 13 will be fun night at the home of Nancy Grau, where annual reports will be presented. This night will also be guest night.

May 27 is the annual Spring Dinner and installation of officers to be held at Weber's Inn in Ann Arbor at 7 p.m.

Secret Pal thank-yous followed. Sus Schroen, a social worker from Spaulding for Children presented the evening's program.

Miss Schroen stated that Spaulding for Children is not a state-supported organization, but a privately funded agency which places older and handicapped children for adoption.

The Spaulding home provides offices for the director and social case workers and does not care for the children there.

Last February, the Chelsea Child Study Club donated \$370 to Spaulding.

Members were told that the donation went towards sponsoring a young boy and girl for adoption. The club heard their stories and was delighted to hear that both of them are now in the adoption process with families waiting.

Co-hostesses for the meeting were Gail Finch and Ruth Harbaugh.

Modern Mothers Enjoy Talk By Obstetrician

Modern Mothers Child Study Club members enjoyed a talk given by gynecologist obstetrician, Dr. Marvin Schrock of Ann Arbor, at their April 22 meeting.

Held at the home of Barbara Brown, the ladies prepared for Dr. Schrock's talk by submitting questions in advance so that the doctor could direct his talk to their specific concerns.

One of the evening's guests, Sandy Schunk, Girl Scout service director for Chelsea, gave a brief talk about the organization.

Other guests were Joanne Eisenbeiser, Virginia Meyer, Carol Smith and Kay Farley.

Plans are being made for the Chelsea High school honors banquet slated for May 21.

Refreshments were served by Janet Rossi, Jane Lehmann and Phyllis Tillman.

Modern Mothers will hold their next meeting, May 13 at the home of Lenore Mattoff. The program will be about self-defense.

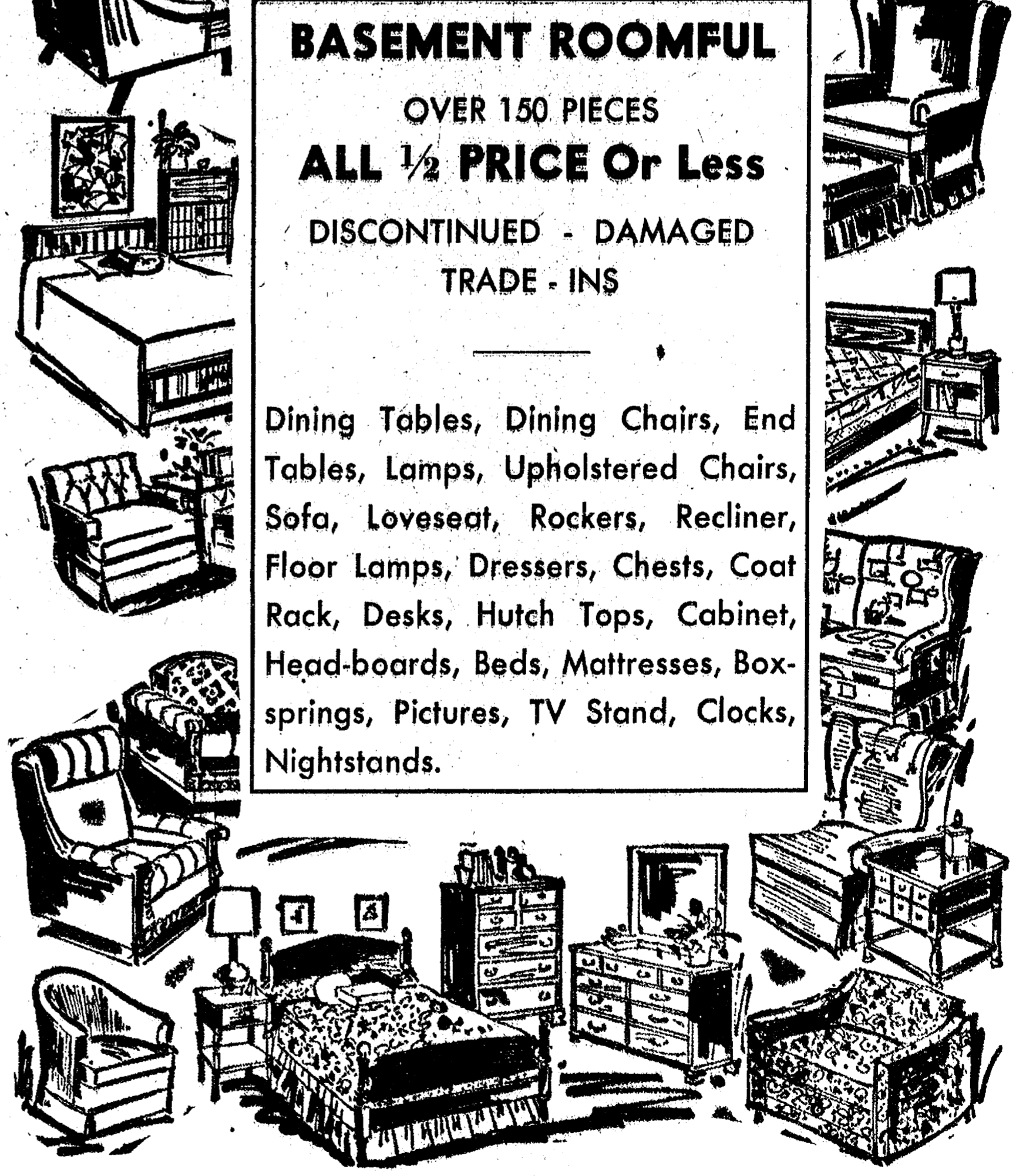
Babies are angels whose wings grow shorter as their legs grow longer.

FURNITURE SALE



BASEMENT ROOMFUL
OVER 150 PIECES
ALL 1/2 PRICE Or Less
DISCONTINUED - DAMAGED
TRADE - INS

Dining Tables, Dining Chairs, End Tables, Lamps, Upholstered Chairs, Sofa, Loveseat, Rockers, Recliner, Floor Lamps, Dressers, Chests, Coat Rack, Desks, Hutch Tops, Cabinet, Head-boards, Beds, Mattresses, Box-springs, Pictures, TV Stand, Clocks, Nightstands.



Merhel Home Furnishings

SPRING IS HERE!

Be Sure To Shop Dancer's First!
Big Selection of New Spring and Summer Wear in All Departments

USE OUR LAY-AWAY PLAN

Many Well Known Brands At Popular Prices

The PLAYTEX SALE IS STILL ON

DANCER'S

Chelsea's Friendly Dept. Store



One love
Two hearts
Three rings

Engagement and wedding ring trilos by Keepsake are outstanding in beauty and quality. Choose from our fine Keepsake collection of 14K gold rings designed by master craftsmen.

CHelsea
WED. RING MAN'S
ELDORADO
WED. RING MAN'S
WED. RING MAN'S

Keepsake
REGISTERED DIAMOND RINGS

WINANS JEWELRY

YOUR AUTHORIZED KEEPSAKE JEWELER



Babe Ruth Travel Team Organizing

Spring has sprung, and so have new plans for the Recreation Council's Babe Ruth League.

The Council baseball program will be expanded with the addition of a Travel Team; a week-end league that will travel through parts of southern and mid-Michigan, playing Saturday and Sunday games.

Try-outs for this new program will be held at 5:30 p.m., Saturday, April 26, at the high school athletic field. A follow-up will be held Sunday, at 2 p.m. at the same place.

These try-outs are only for boys interested in the Travel Team. Boys who are chosen for the Travel Team league will also be expected to play on a Chelsea team.

Thirteen-year-old boys are encouraged to try out for this team.

In order to qualify for the Saturday try-outs, birth certificates must be presented.

The Recreation Council baseball coach, Dave Lukasak, believes that the formation of this new league could lead to national ratings, as the all-stars will play in district and regional play-off competition beginning in mid-July.

Coach Lukasak feels that the boys will gain vast experience in meeting new people by playing in this league.

Chelsea games will be played during the week, and will not interfere with the Travel League games.

Coach Lukasak will be available Saturday to answer questions from boys and their parents.

League Rules

I. The team will be composed of 13-, 14-, and 15-year-olds.

A. These players will be made up from the Chelsea Babe Ruth Teams.

II. Rules for the Try-Outs

A. Date for try-outs will be Saturday, April 26, 5:30 p.m. at the Chelsea High school athletic field, and Sunday at 2 p.m. at the high school field.

B. All persons must bring their birth certificates to meet age requirements.

C. A 13-year-old has the same chance as anyone else.

D. In order to be placed on the Travel Team you must be ready to follow a strict practice schedule with a very few absences.

E. You must have your own glove and baseball shoes.

1. A uniform will be issued to you, but you alone will be responsible for the care of it. (It is not your mother's job.)

2. Uniforms are to be clean at all times.

3. When we travel, you will be representing Chelsea, remember that and be proud of it.

III. Games will be played on the week-ends.

A. We will travel within a 50-mile radius.

IV. The Chelsea team will play in State competition.

A. We will have a chance at the National Rating.

V. Once you have made the Travel Team does not mean that

THEY FILLED 79 BAGS OF TRASH collected from the Waterloo Recreation Area. Boy Scouts from Troop 465 spent last Saturday working in the area as trash collectors for community service hours needed in order to receive a merit badge. Pictured in the front, left to right, are Mark



HOLDING SIGNS and the materials needed to tack them up in the Waterloo Recreation Area are Boy Scouts from Troop 465. The boys, left to right, are Jeff Jahnke, Steve Hegadorn, Jimmy Brown

Boy Scout Troop 465 Undertakes Trash Pickup in Waterloo Rec. Area

Boy Scouts of Troop 465 were hard at work this last week-end and will continue to be for the next two to three, collecting trash in the Waterloo Recreation Area, and putting up signs for the Conservation Department.

The boys wanted something to do to earn their merit badges, Scoutmaster Art Steinway brainstormed a while, finally coming upon the thought, "the Waterloo Recreation Area, Department of Natural Resources." Steinway called the department and asked that they assign a job or two to

the boys so that they might acquire hours needed in community service to earn a merit badge.

Well, they got it. Just last week-end, the boys were divided into two groups, one went collecting trash, the other posting signs in the Waterloo Recreation Area.

After two hours of work, the trash collectors had filled 79 bags, and the sign posters had a good start on their project.

The boys expect to finish the job with two to three more week-ends of work.

More than \$184,100 in scholarships was awarded 265 national winners during the 53rd National 4-H Congress in Chicago in December. The awards are provided by corporations, businesses and foundations in some 43 different programs.

Girl Scout Association Honors Adult Volunteers

Western Washtenaw Area Association of Huron Valley Girl Scouts honored their adult volunteers Tuesday, April 15, at a bi-centennial candlelight dinner held at the Knights of Columbus Hall in Manchester, catered by the Manchester Girl Scouts.

Cadet and Juniors were serving the dinner, parents were in charge of the kitchen with the help of the girls preparing the dinner. Fathers did the dishes. The tables were decorated with the bicentennial theme in mind, napkin rings were made by the Cadette troop, centerpieces by the Cadette troop, and mobiles by the Senior troop; name tags by the Juniors. After the dinner the Manchester varsity choir performed.

After delegates, led by Mrs. Mary Burke, Dexter, had reported on the annual meeting in Plymouth, March 19, honors were presented, starting with a special recognition, presented by Mrs. Woodie Merchant, member of the board, to H. W. Kuebler, Saline, who has opened his property to the Girl Scouts for camping for many years.

Scrolls were presented by the Area Association chairman, Mrs. Grete Skjaerlund to Mrs. Kay Roesch, Manchester; Mrs. Julia Thornbury, Chelsea, both members of the board; and to Mrs. Ruth Ulrich, Dexter's cookie chairman since 1967. Pins for being in Girl Scouting 5, 10, and 15 years were given to 47 adults.

Troop service directors reported on the activities of their clusters, Mrs. Sandy Schmunk from Chelsea, Mrs. Marcia Piper with the help of Mrs. Lil Burby, from Dexter, Mrs. Lois Rodrigues from Manchester, Mrs. Lucy Crossley and Mrs. Vicki Hicks from Saline. They were given small gifts of

appreciation for their good job done. The four cookie chairmen, Mrs. Marquita Satterthwaite, Chelsea; Mrs. Ruth Ulrich, Dexter; Mrs. Chris Honer, Manchester; Mrs. Charlene Foster, Saline, did a great job this year. The girls sold a total of 2,869 boxes of cookies. The entire council sold 380,000 boxes.

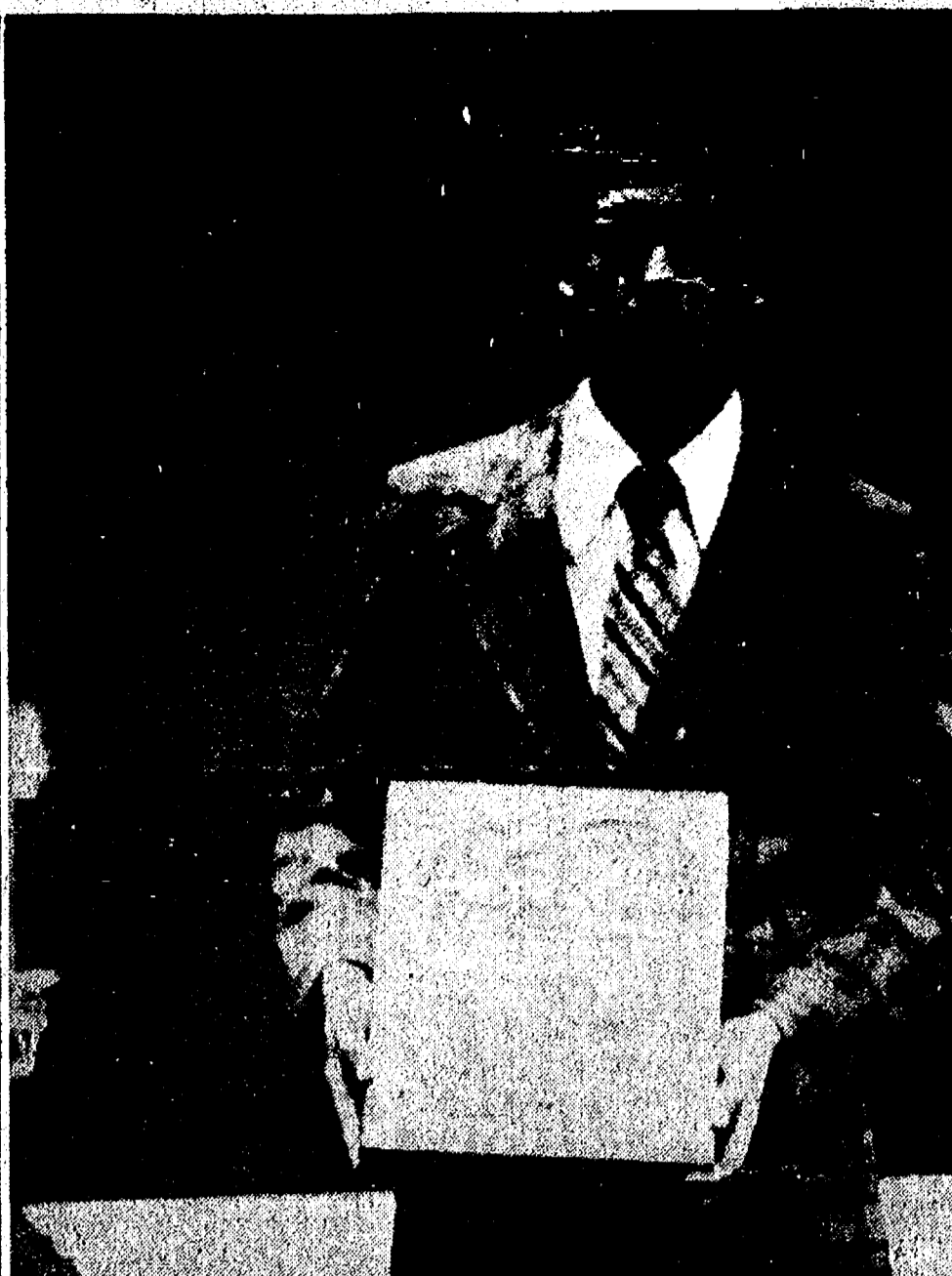
Pam Lovell, Dexter Cadette Troop 125, was presented with a gift from the council as her prize for a second place in the cookie patch design contest.

Mrs. Jean Galan, of Dexter, president of the Huron Valley Girl Scouts, made a surprise visit as an incognito assistant leader. After driving to Manchester to be at the dinner, she returned to Lansing where she attended a two-day conference. She presented a new leader pin to all leaders, donated to the council by an anonymous giver.

Finally, the Manchester Scouts honored some of their local people. Robert Armentrout was given a plaque as a thanks for helping bring Girl Scouting back to Manchester. Also they gave recognition and thanks to the Jaycees and Jayettes of Manchester who are sponsors of some of the troops. The Knights of Columbus was given a thanks for using their hall for troop meetings and for the dinner.

At the close of the meeting it was voted to give part of the profit of the dinner to the Juliette Low Fund.

Lower Huron Metropark near Belleville—This 1,200-acre park opened in 1952, when area residents visited the site to picnic, hike along trails or enjoy an outing. Winter sports were added in 1953.



INDUCTED INTO ALPHA CHI academic honors society at Lake Superior State College in Sault Ste. Marie is Bruce G. Clark. A senior at the college majoring in history, Bruce is the son of Mr. and Mrs. Stephen Clark of 1334 Noah Rd. Alpha Chi is a co-educational honor society "to promote academic excellence and exemplary character among college and university students." The society annually admits those junior and senior students who rank in the upper tenth of their classes.

you cannot be replaced. A. The coach can and will drop any player who does not contribute to the team. B. The coach feels that his time is free, for this his players should be able to sacrifice hard work and their time for their love of baseball. VI. Coach for the team will be Dave Lukasak. Any questions should be directed to him.

DRIVE INTO SPRING

WITH A

NEW CHEVY TRUCK

Come in today and see the complete line-up of Chevy trucks for 1975!



LLOYD BRIDGES CHEVROLET

"For Quality and Service at Low Prices"

SALES HOURS: 405 NORTH MAIN, CHELSEA
 Daily 8 to 6, Sat., 8 to 5
 Monday, 8-8:30
PHONE 475-1373

SOUTHERN BOY MANOR MOTEL
 Efficiency Units - By Day, Week, or Month
 13190 M-52
 PHONE (517) 851-4213
 (2 miles south of Stockbridge)

JET SPRAY CARPET CLEANING

SPRING SPECIAL

★ ANY LIVING ROOM AND ADJOINING HALL OR DINING ROOM \$25
 ★ EACH ADDITIONAL ROOM \$10

ASK ABOUT UPHOLSTERY CLEANING
 ★ WORKMANSHIP GUARANTEED ★

SPRING SPECIAL EFFECTIVE APRIL 24 - MAY 25

Phone John Lixey
761-3025 or 475-1509



Polly's MASTER MARKETS

1101 M52
CHELSEA

201 PARK
VANDERCOOK LK.

1621
Spring Arbor Rd.
JACKSON

960
N. WEST AVE.
JACKSON

115
W. PROSPECT ST.
JACKSON

1809
E. MICH. AVE.
JACKSON

get to know us...

WE CAN HELP YOU SAVE ON YOUR FOOD BILL!

OPEN . 8 A.M. TO 10 P.M.
DAILY.

OPEN 9 A.M. TO 6 P.M.
SUNDAY.

- ★ **QUALITY PRODUCE**
- ★ **QUALITY MEAT**
- ★ **COLD BEER & WINE**
- ★ **LOTTERY TICKETS**
- ★ **SIDES OF BEEF**
- ★ **FRUIT BASKETS**
- ★ **DRY CLEANING**
- ★ **PHOTO PROCESSING**
- ★ **VARIETY AT LOW PRICES**

Polly's MASTER MARKETS

1101 M52 CHELSEA	201 PARK VANDERCOOK LK.	1621 Spring Arbor Rd. JACKSON
960 N. WEST AVE. JACKSON	115 W. PROSPECT ST. JACKSON	1809 E. MICH. AVE. JACKSON

OPEN 8 A.M. 'TIL 10 P.M. DAILY
9 A.M. 'TIL 6 P.M. SUNDAY
ALL PRICES EFFECTIVE THRU SUNDAY, APRIL 6, 1975
WE RESERVE THE RIGHT TO LIMIT QUANTITIES



BORDEN
SHERBET
OR
BORDEN LITE-LINE
ICE MILK
Your Choice **79¢**
1/2-GAL.



RIGHT NOW,
YOUR BEST BUY IS OUR
Priced Right **MEAT**

CORAL PARTS MISSING

Turkeys



8/14-LB.
AVERAGE

39¢

LEAN TENDER

Smoked Picnics LB.

59¢

POLLY'S PRIDE QUALITY BEEF

Standing Rib ROAST LB.

139

POLLY'S PRIDE QUALITY BEEF

ROLLED
Rump Roast LB.

139

ARMOUR
CANNED PICNIC
\$3.19
3-LB.



ARMOUR
Boneless **FRESH HAM**
\$1.19 LB.
water added

LEAN TENDER
SPARE RIBS
LB. **\$1.09**

FARMER PEETS
REGULAR HAM

shank half LB. **75¢** water added

FARMLAND
CANNED HAMS

5-LB. **\$6.49**

3-LB. **\$3.99**

butt half LB. **85¢**
center slices LB. **\$1.39**

SAVE \$1.00 W/IN-STORE COUPON
Fresh Ground All Beef
HAMBURG
\$5.90
10-LBS.

SAVE 20¢ W/IN-STORE COUPON
Eckrich Sliced
BOLOGNA
\$1.27
1-LB.

SAVE 20¢ W/IN-STORE COUPON
Eckrich
Smokie Links
79¢
10-OZ.



for your FREEZER

POLLY'S PRIDE QUALITY
BEEF SIDES LB. **79¢**
POLLY'S PRIDE QUALITY
BEEF HINDS LB. **99¢**
POLLY'S PRIDE QUALITY
BEEF CHUCKS LB. **69¢**
POLLY'S PRIDE QUALITY
BEEF LOINS LB. **\$1.39**

CUT and WRAPPED FREE!

SAVE 30¢ FARMER PEETS
HOT DOGS 1-LB. **89¢**

SAVE 20¢ FARMER PEETS
V.C. SAUSAGE LB. **79¢**

SAVE 30¢ FARMER PEETS BULK
RING BOLOGNA LB. **89¢**

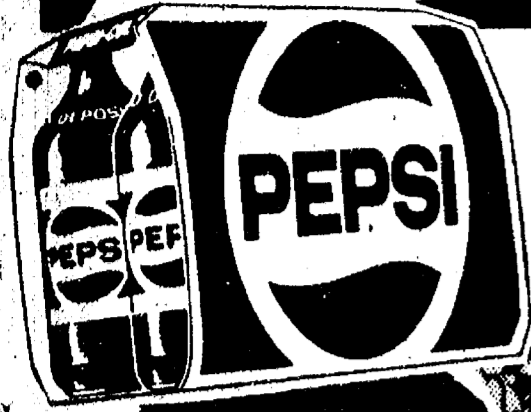
SAVE 30¢
SWANEE BACON 3-LB. **\$1.49**

SAVE 20¢ FRESH
TURBOT FILLETS LB. **79¢**

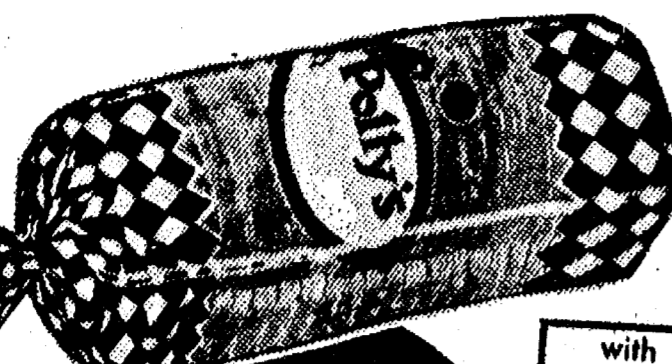
SAVE 30¢ FRESH FILLETS
OCEAN PERCH LB. **79¢**

YOU CAN'T HELP SAVING

AT THESE LOW PRICES



16-OZ. N.R.
with coupon & \$5.00 purchase
\$1.39
DIET **\$1.29**



with coupon & \$5.00 purchase
3 20-OZ. LOAVES
for **89¢**



with coupon & \$5.00 purchase
2 1/2-GALS.
for **99¢**



with coupon & \$5.00 purchase
39¢ doz.



Polly's MASTER MARKETS

1101 M52 CHELSEA	201 PARK VANDERCOOK LK.	1621 Spring Arbor Rd. JACKSON
960 N. WEST AVE. JACKSON	115 W. PROSPECT ST. JACKSON	1809 E. MICH. AVE. JACKSON

VALUABLE COUPON
SAVE 60¢
W/\$5.00 PURCHASE N.R. 16-OZ. 8-PK PEPSI REG. \$1.39 DIET \$1.29
LIMIT 1 PER COUPON PER FAMILY GOOD THRU SUN., APRIL 27, 1975

VALUABLE COUPON
SAVE 20¢
W/\$5.00 PURCHASE POLLY'S WHITE BREAD 3 20-OZ. LIVES. 89¢
LIMIT 3 PER COUPON PER FAMILY GOOD THRU SUN., APRIL 27, 1975

VALUABLE COUPON
SAVE 56¢
W/\$5.00 PURCHASE LIGHT N' LIVELY MILK 2 1/2-GALS. 99¢
LIMIT 2 PER COUPON PER FAMILY GOOD THRU SUN., APRIL 27, 1975

VALUABLE COUPON
SAVE 10¢
W/\$5.00 PURCHASE POLLY'S A SMALL EGGS 39¢ doz.
LIMIT 1 PER COUPON PER FAMILY GOOD THRU SUN., APRIL 27, 1975



SAVE 20¢ SWIFTS
PREM 12-OZ. **69¢**
SAVE 20¢ SWIFTS
BEEF STEW 24-OZ. **69¢**
SAVE 20¢ SWIFTS
CHILI WITHOUT BEANS 24-OZ. **69¢**
SAVE 18¢ SWIFTS
CHILI W/BEANS 15 1/2-OZ. **49¢**
SAVE 50¢ SWIFTS
CHICKEN W/DUMPLINGS 50-OZ. **99¢**



SAVE 10¢ W/IN-STORE COUPON TWIN-PAK
PRINGLES 9-OZ. **79¢**

SAVE 16¢ W/IN-STORE COUPON BETTY CROCKER
HAMBURGER HELPER 6/9 OZ. **49¢**

SAVE 18¢ W/IN-STORE COUPON LIQUID
JOY for DISHES 22-OZ. **59¢**

SAVE 36¢ W/IN-STORE COUPON LIQUID
AJAX CLEANER 40-OZ. **99¢**

SAVE 20¢ W/IN-STORE COUPON NABISCO
FIG NEWTONS 16-OZ. **69¢**

EVERYDAY LOW, LOW
Before Inflation Prices!
CHECK & COMPARE . . . YOU'LL SAVE MORE AT POLLY'S

- Del Monte Whole Potatoes 16 oz. 25¢
- Hersheys inst. Cocoa 2 lb. \$1.59
- Hersheys Choc Syrup 16 oz. 43¢
- Glade Air Freshener 7 oz. 49¢
- Dutch Treat Creme Stk 6 oz. 68¢
- Dutch Treat Sugar Wafer 8 oz. 65¢
- Pamper's Daytime 24 ct. \$1.97
- Pamper's Day-Extra Absorb 24 ct. \$1.97
- Bes Pak Leaf & Lawn 6 bush bag 99¢
- Tide Det. 10¢ off 49 oz. \$1.19
- Kleenex Jumbo Towel 56¢
- Polly's Book Matches 50 ct. 19¢
- Maxwell House inst. coffee 14 oz. \$2.69
- Max Pak sample size 59¢
- Vanity Fair pr. Facial Tissue 134 ct. 39¢
- Del Monte Catsup 38 oz. 79¢
- Stokley Cut Gr. Bean 16 oz. 31¢
- Chef's Delight Cheese 2 lb. \$1.23
- Merico Old Fashioned Texas Biscuits 12 oz. 25¢
- Merico Buttermilk Texas Biscuits 12 oz. 25¢



SAVE 22¢ DEL MONTE SOCKEYE
RED SALMON 15-OZ. **99¢**

SAVE 10¢ KLEENEX BOUTIQUE
FACIAL TISSUES 3 125-CT. BOXES **\$1**

SAVE 18¢ CONTADINA
STEWED TOMATOES 3 16-OZ. **\$1**

SAVE 4 CONTADINA
TOMATO SAUCE 8-OZ. **15¢**

SAVE 36¢ CARNATION
SLENDER 4-CT. BOX **69¢**

SAVE UP TO \$7.04

WITH IN-STORE COUPONS, PLUS COUPONS IN THIS AD

BUY 1 SAVE 36¢	LIQUID AJAX CLEANER	40-OZ.	99¢
BUY 1 SAVE 16¢	BETTY CROCKER HAMBURGER HELPER	6/9 OZ.	49¢
BUY 1 SAVE 12¢	GLAD SANDWICH BAGS	50-CT.	19¢
BUY 1 SAVE 18¢	LIQUID JOY for DISHES	22-OZ.	59¢
BUY 1 SAVE 20¢	NABISCO FIG NEWTONS	16-OZ.	69¢
BUY 1 SAVE 10¢	TWIN-PAK PRINGLES POTATO CHIPS	9-OZ.	79¢
BUY 1 SAVE 30¢	SANDERS DANISH SQUARES	6-PK.	99¢
BUY 6 SAVE 38¢	SCOT LAD LEMONADE 6	6-OZ. CANS	for \$1
BUY 10 LBS. SAVE \$1.00	FRESH GROUND 10-LBS. HAMBURG		\$5.90
BUY 1 SAVE 20¢	ECKRICH SLICED BOLOGNA	1-LB.	\$1.27
BUY 1 SAVE 20¢	ECKRICH SMOKIE LINKS	10-OZ.	79¢
BUY 1 SAVE 15¢	ON ANY 1-LB. BACON		15¢ OFF
BUY 1 SAVE \$1.95	SAV-A-LOT THERAGRAN-M VITAMINS	130-CT.	\$3.94
BUY 1 SAVE 38¢	SAV-A-LOT LILLY'S TESTAPE		\$1.59
SAVE at SAV-A-LOT	U-40 INSULIN	88¢	
	U-80 INSULIN	\$1.88	
	U-100 INSULIN	\$2.39	

SAVE 46¢ GORTON
FISH N' FRIES 2-LB. **\$1.49**

SAVE 20¢ JOHNS THICK CRUST
HOMESTYLE PIZZA 13-OZ. **79¢**

SAVE 6¢ SCOT LAD
ORANGE JUICE 16-OZ. **53¢**

SAVE 10¢ QUEEN OF SCOT
GREEN BEANS 9-OZ. **29¢**

SAVE 10¢ QUEEN OF SCOT
MIXED VEGETABLES 10-OZ. **29¢**

SAVE 30¢ BOOTH
SHRIMP STICKS 9-OZ. **69¢**

SAVE 20¢ BANQUET
MACARONI & CHEESE 2-LB. **89¢**

SAVE 38¢ W/IN-STORE COUPON
SCOT LAD LEMONADE 6 6-OZ. CANS **\$1**

SAV-A-LOT DRUGS
POLLY'S ON SPRING ARBOR RD. POLLY'S ON N. WEST AVE

We Welcome your comparison . . . our prices are the lowest in town

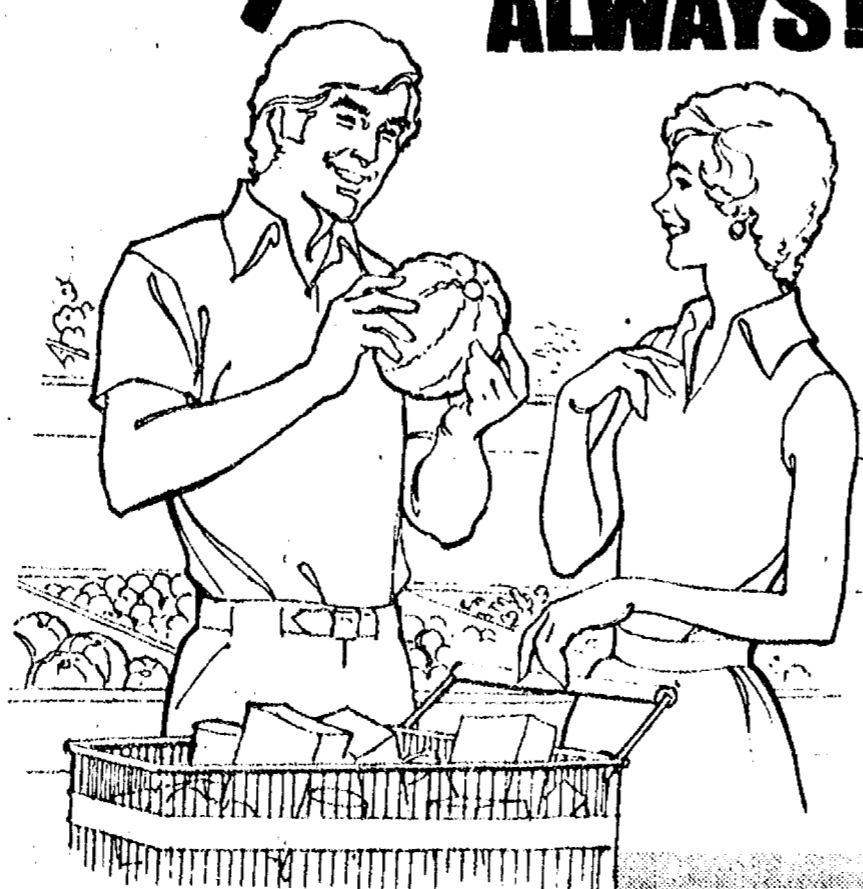
- SERVICE BUILT OUR BUSINESS
- YOUR PROBLEMS ARE OURS
- FAIR PRICES
- FRIENDLY HELP TO AID & ASSIST YOU

WE PARTICIPATE IN ALL UNION & INSURANCE PRESCRIPTION PROGRAMS

THERAGRAN-M VITAMINS 100 CT W/30 FREE \$5.89 VALUE only \$3.94 W/IN-STORE COUPON	LILLY'S TESTAPE \$1.97 VALUE only \$1.59 W/IN-STORE COUPON	U-40 INSULIN 88¢ U-80 INSULIN \$1.88 U-100 INSULIN \$2.39 W/IN-STORE COUPON
--	--	---

YOU CAN

Count on Freshness ALWAYS!



VINE RIPENED **TOMATOES** LB. **49¢**

FIRST OF THE SEASON **WATERMELONS** LB. **19¢**

BEAUTIFUL RED **CHERRY TOMATOES** PT. **49¢**

CRISP, RED
RADISHES 6-OZ. PKG. **10¢**

CALIFORNIA **PINK OR WHITE GRAPEFRUIT** 5 LB. BAG **79¢**

Our produce man is top banana when it comes to fruits and vegetables. He stocks the juiciest...crispiest produce. Look for weekly specials!

**Thank
You**

FOR SHOPPING AT...



**WHERE WE ARE
HAPPY TO.....**

save YOU MONEY!